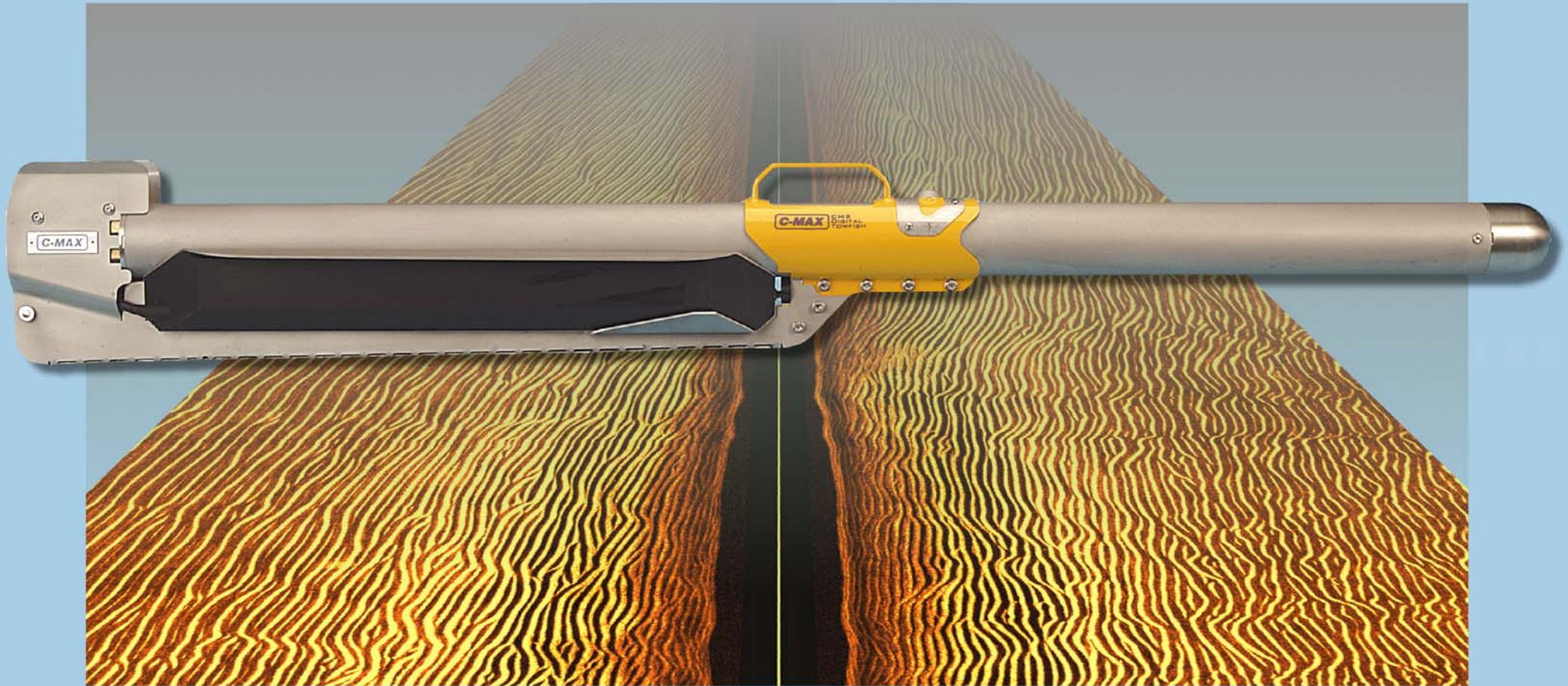


The CM2 Sidescan Sonar System...

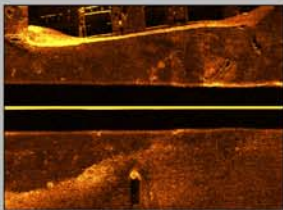
High definition .. Versatile .. Easy to use .. Robust



www.cmaxsonar.com

System with the CM2's standard STR topside unit and the optional compact winch

The STR connects to the PC via a simple USB link. The CM2 24V winch features an overload clutch and soft start, and carries a 300m steel-armoured tow cable. Polypropylene transit cases are available for all equipment.

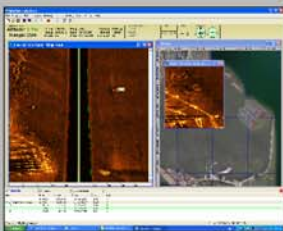


High definition images

- choice of dual frequency 325/100kHz or 780/325kHz towfish
- ultra-low-noise towfish electronics
- digital towfish and 2-wire telemetry; no crosstalk or loss of quality
- enhanced immunity to unwanted surface reflections

Versatile

- wide range of towing options, including the compact CM2 winch
- optional wing depressor for up to 50% increased towfish depth
- optional heading, roll, pitch and depth sensors
- ROV and AUV versions
- supports third-party alternatives to MaxView



Easy To Use

- intuitive, full-featured MaxView software
- all MaxView facilities, except real-time acquisition, available licence-free
- automatic towfish gain control and altitude measurement
- transducer beam depression switched in seconds, without tools
- towfish design allows easy launch and recovery, even with depressor fitted

Robust

- stainless steel towfish rated to 2500m
- safety mechanism to save the towfish if it strikes an obstruction
- rugged topside electronics with all stainless steel case
- optional IP67 topside
- 3 year warranty



Open-boat system with waterproof topside and kevlar-protected cable

The C-Shell provides full waterproof (IP67) integrity for the topside electronics and its connections. The hydrodynamics and mass distribution of the towfish give the stability necessary for high-resolution imaging. The towfish and 50m kevlar-coax cable are easily handled in small craft.